



Security in action

OXYGEN/FUEL FLASHBACK ARRESTORS FOR REGULATOR MOUNTING **GCE SAFE-GUARD-5**



EDITION 1/2013

The latest innovation from GCE the SAFE-GUARD-5 offers the maximum level of protection required by EN730-1 to prevent dangerous flashbacks from reaching the regulator and cylinder supply sources.

FEATURES

There are so many conditions that can cause a flashback, the fitting a flashback arrester is commonsense. This unit offers the highest level of safety;

- Maximum number of safety features defined by EN730-1
- High visibility trip/reset lever coupled with quick acting reset even when pressurised
- Angled inlet to minimise hose damage
- 100% production flame tested for Flashback resistance
- Inspection dates can be marked on product for easy reference

FUNCTIONS

- Flame arresting element FA
- Non return valve NV
- Pressure sensitive cut off valve PV
- Temperature sensitive cut off valve TV
- Reset mechanism to clearly advise unit activation RM



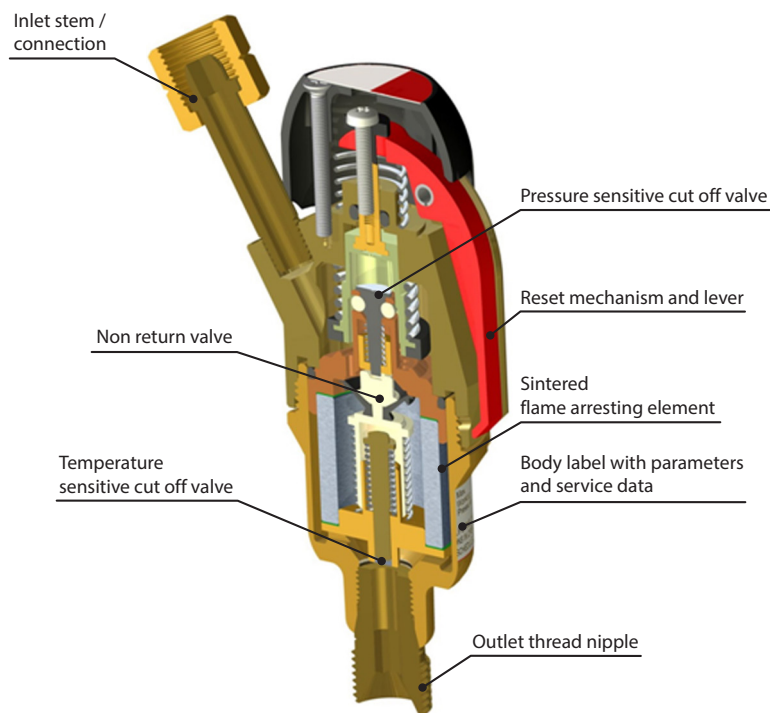
GCE SAFE GUARD 5

TECHNICAL DATA

GAS OPTIONS AND SERVICE PRESSURE

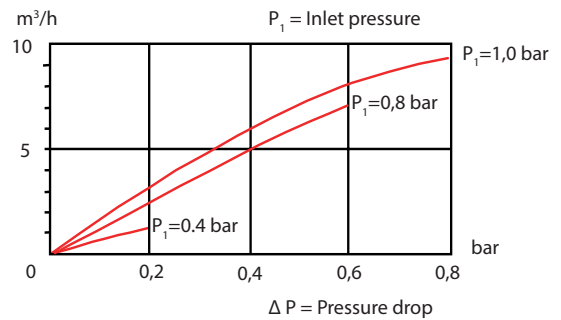
Right Hand	
Oxygen:	10 bar
Left Hand	
Acetylene:	1.5 bar
Hydrogen:	5 bar
Propane:	5 bar
Methane:	5 bar
Natural Gas:	5 bar
MPS:	5 bar
MAPP:	5 bar

INTERNAL SAFETY DEVICES

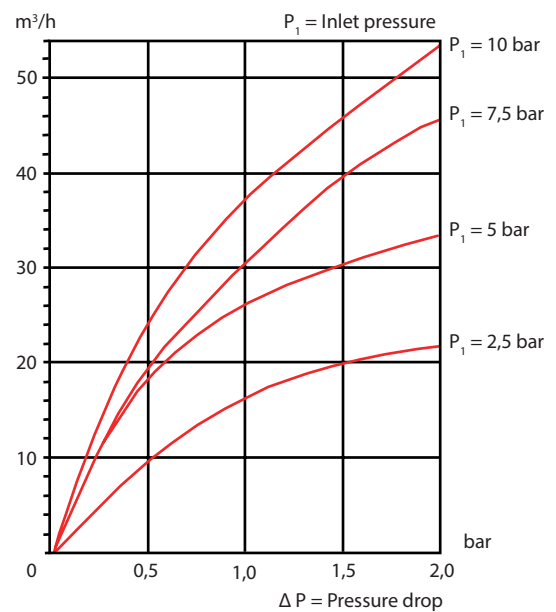


Art. No.	Gas	Inlet connection	Outlet connection	Country
0764456	Fuel	G3/8"L Female	G3/8"L Male	Europe
0764457	Oxygen	G3/8" Female	G3/8" Male	Europe
0764458	Oxygen	G1/4" Female	G1/4" Male	Europe
0764461	Fuel	UNF 9/16" L Female	UNF 9/16"L Male	Americas
0764462	Oxygen	UNF 9/16" Female	UNF 9/16" Male	Americas
0764463	Oxygen	M16 Female	M16 Male	France, China
0764464	Fuel	M16L Female	M16L Male	France, China

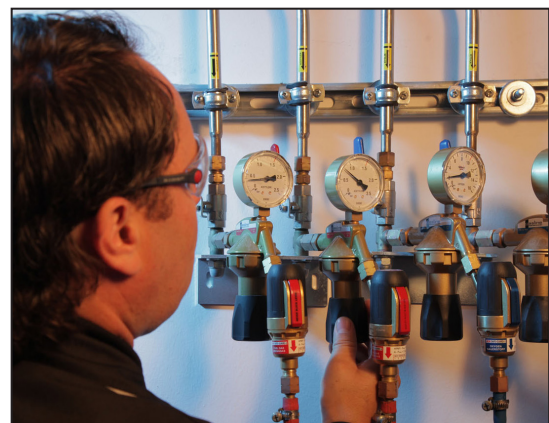
FLOW CHART - FUEL GAS



FLOW CHART - OXYGEN



APPLICATION



Art. Nr. 735100000698. Edition 1/2013. Alterations are subject to change without notice. 2.30813hz © 2013



Gas Control Equipment
www.gcegroup.com