



CYLINDER VALVE WITH INTEGRATED PRESSURE  
REGULATOR FOR USE WITH MEDICAL GASES

## MEDIVITAL® E E-GAUGE SOLUTION

### GENERAL

- Available for MediVital® E valves
- Testing in accordance with EN 60601-1, EN 60601-1-2 and EN 60601-1-11

### USER FRIENDLY

- Easy to understand
- Compact, clear display
- Continuous live information provided

### FUNCTION

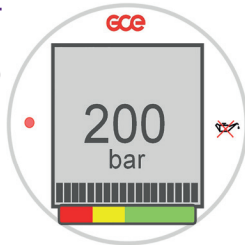
- Live cylinder pressure display
- “Hours and minutes remaining at current flow” indicator
- Defined alerts indication



# STANDARD OPERATIONS

## INDICATION OF PRESSURE CONTENT IN CYLINDER

- Inlet pressure available (200/300 bar)
- Adjustable values in bar or psi when outlet flow = 0 lpm
- Bar graph displayed
- Coloured scale:
  - green 50-100% of inlet pressure
  - yellow 25-50% of inlet pressure
  - red 0-25% of inlet pressure

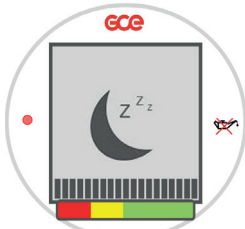


## INDICATION OF REMAINING TIME

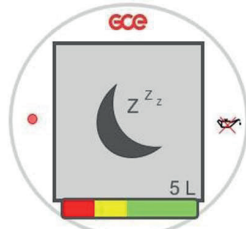
- Time in hours : minutes (hr:min) when outlet flow > 0 lpm
- Up to 15 bar in cylinder
- Change of flow - prompt recalculation of the remaining time
- Bar graph displayed

## DEEP SLEEP MODE

- To ensure minimum consumption of battery energy
- The deep sleep mode is activated about 10 hours of inactivity (no pressure changes, no flow control knob position changes)
- The deep sleep mode is terminated by the flow control knob turning to different position
- Bluetooth inactive



**CYLINDER CONTENT > 0 BAR**



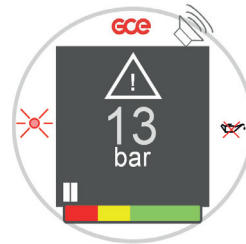
**CYLINDER CONTENT 0 BAR**

## ALERTS

Any alert or failure mode will not stop the flow of gas

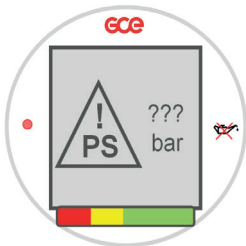
### LOW PRESSURE AT 50 BAR

- Pressure drops below 50 bar
- Reverse display colours
- Acoustic and LED signalization
- Indication of remaining time
- Bar graph displayed



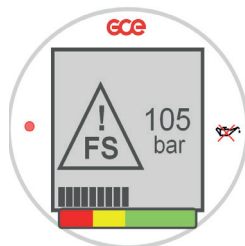
### LOW PRESSURE AT 15 BAR

- Pressure drops below 15 bar
- Reverse display colours
- Acoustic and LED signalization
- Indication of pressure value
- Bar graph displayed



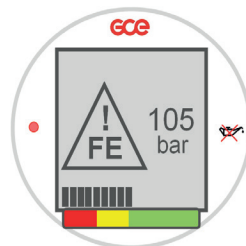
### PRESSURE SENSOR FAILURE

- Pressure measuring is not working
- No pressure displayed
- No bar graph displayed



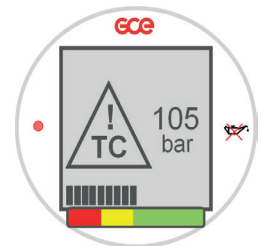
### FLOW SENSOR FAILURE

- Flow set in undefined position or flow sensor out of operation
- Pressure displayed
- Bar graph displayed



### FLOW ERROR

- A blockage of flow (clogged hose or closed SOV)
- Minimum flow set up 1 lpm
- Pressure displayed
- Bar graph displayed

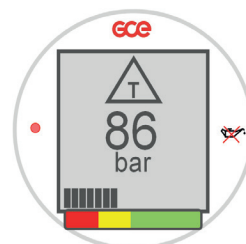
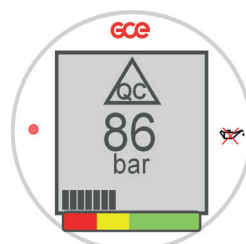


### OUT OF THERMAL CONDITIONS

- Ambient temperature out of operating temperature
- Pressure displayed
- Bar graph displayed

### USE OF QUICK COUPLER

- Pressure outlet in use
- Pressure displayed

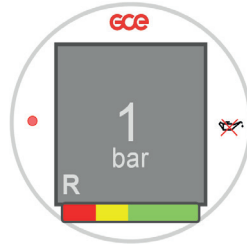


### DEVICE TEMPERING

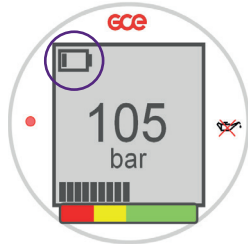
- In case of rapid temperature change
- Pressure displayed
- Bar graph displayed

**INDICATION OF RPD FAILURE**

- “R” appears when actual pressure drops under 2 bar
- **Avoid manual pre-fill and check of RPD function**

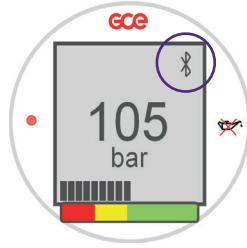


PATENTED



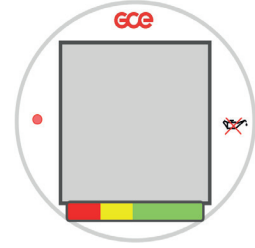
**LOW BATTERY VOLTAGE**

- If permanently visible - change of battery needed
- **Battery exchangeability**



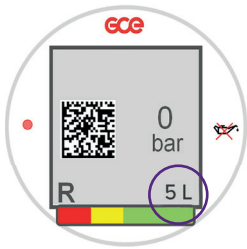
**BLUETOOTH STATUS SYMBOL**

- Communication with mobile application

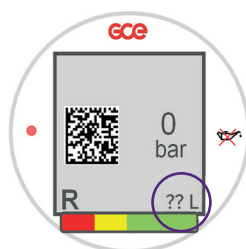


**EMPTY SCREEN**

- Ambient temperature drops below - 35°C
- Display is switched on when temperature above - 30°C



**PRE-SET CYLINDER SIZE**



**NOT PRE-SET CYLINDER SIZE**

**DATAMATRIX CODE**

- Displayed at 0 bar
- Information about pre-set cylinder volume
- Usable for easier pairing with mobile application

**TECHNICAL DATA**

Gas:	O <sub>2</sub> , AIR
Inlet pressure:	Up to 300 bar (4350 psi)
Battery:	Li Ion battery 3,6V
Display:	
Dimensions:	23mmx23mm, 128x128 px
Diameter:	32 mm (1.3")
Type:	Monochromatic LCD Memory Pixel Ultra low power consumption
IP rating:	IP 55
Comms:	Bluetooth 4.2
Regulatory status:	Complies with MDD 93/42/EEC
	Complies with TPED 2010/35 EU
	Complies with EN 60601-1
	Complies with EN 60601-1-2 Complies with EN 60601-1-11
Manufacturer:	GCE s.r.o, Žižkova 381, 583 01 Chotěboř, Czech Republic

## REGIONAL OFFICES

### EUROPE

---

CZECH REPUBLIC  
FRANCE  
GERMANY  
HUNGARY  
ITALY  
POLAND  
PORTUGAL  
ROMANIA  
SPAIN  
SWEDEN  
UNITED KINGDOM & IRELAND

### AMERICA

---

LATIN AMERICA  
MEXICO  
USA

### ASIA

---

CHINA  
INDIA  
RUSSIA



visit: [www.gcegroup.com](http://www.gcegroup.com)