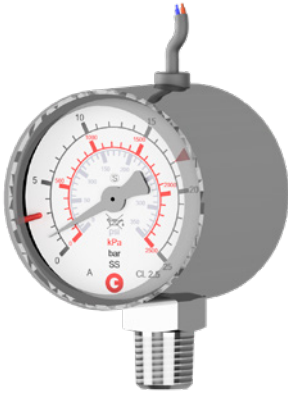


DRUVA®PUR/TEC REED CONTACT GAUGE FOR HIGH PURITY GASES

REED contact gauges for potential-free indication of a falling or rising pressure on both the upstream and downstream side of line regulators, cylinder regulators and manifolds.



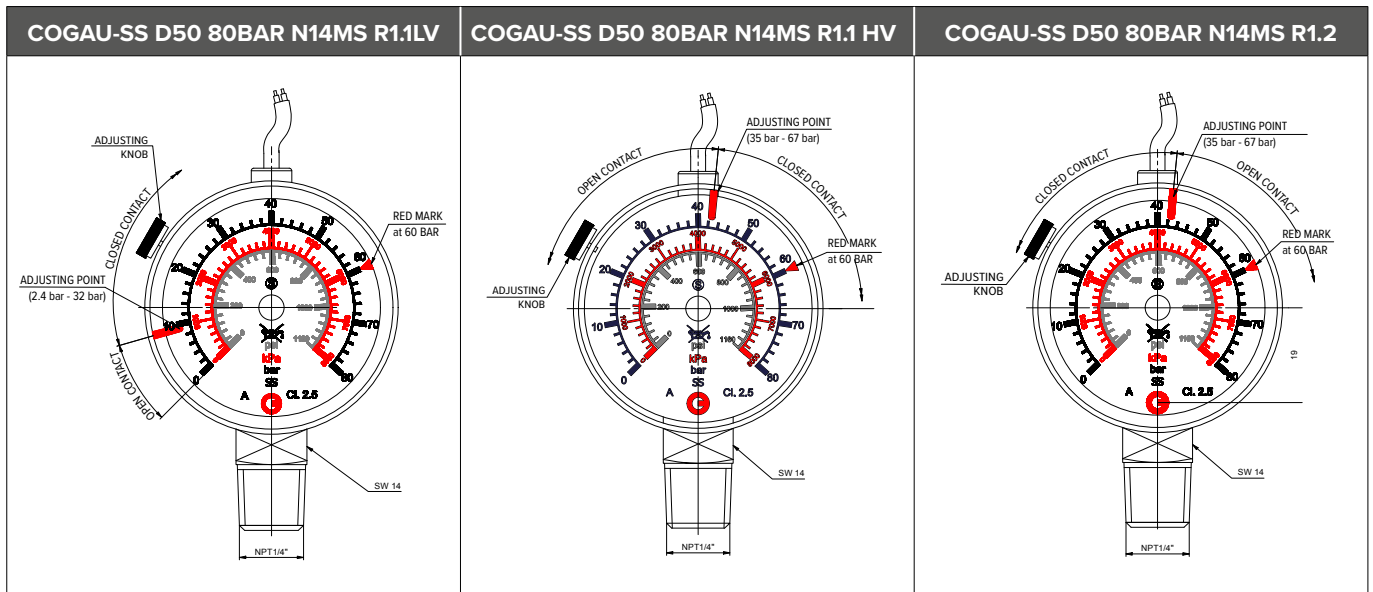
TECHNICAL SPECIFICATIONS:

- > The stainless steel gauge housing is designed with a solid baffle wall. This allows in the event of an accident that gases can be discharged via the blow-out back of the gauge. This construction corresponds to the safety version with the abbreviation S3 according to EN 837-1.
- > The potential-free signal of the REED contact gauges can be processed by our own signal boxes of the type DGM- SK as well as by superordinate building management systems.
- > When operated in an intrinsically safe circuit according to EN 60079-11, the contact gauge can be used in hazardous areas.

TECHNICAL DATA	
Operating temperature measured material:	-20 °C to +60 °C
Operating temperature ambient:	-20 °C to +60 °C
Storage temperature:	-40 °C to +70 °C
Nominal size:	50 mm
Accuracy class:	2,5
Connection:	NPT ¼" male
Leak tightness:	1x10 ⁻⁶ mbar x l/s
Cleanliness:	Free of oil & grease
Numbers on dial:	bar (outer ring) kPa (middle ring) psi (inner ring)
Materials	
Measuring element:	1.4404
Mechanics:	1.4301, 1.4305, 1.4310
Connection:	1.4404
Case:	1.4301
Dial:	Aluminium
Pointer:	Aluminium
Window:	Polycarbonat
Adjustment range/Red marker:	see ordering information
Contact type:	REED contact, bi-stable
Switch function:	RK1.1: Contact closes on rising pressure RK1.2: Contact opens on rising pressure
Electrical data	
Operating voltage:	U max.=24 V DC/AC
Current input:	I max.= 0,4 A
Breaking capacity:	P max.= 8W/ 8 VA
Connection cable	
Length:	1m
Colour:	Blue
Ends:	Bared with tinned ends
Adjustment range	
R 1.1 LV (low value):	3% - 40% of full scale
R 1.1 HV (high value):	43% - 84% of full scale
R 1.2:	43% - 84% of full scale

ORDERING INFORMATION

Example how to set the pressure for the different REED contact gauges



Product Name	Scale Value [bar]	Red Mark [bar]	Switch Function	Adjustment Range	GCE Item- No.
REED Contact Gauge R1.1LV * – CONTACT CLOSSES ON RISING PRESSURE Low Value					
* The contact pressure gauges type R1.1LV correspond to the high pressure contact pressure gauge, which is referred to as type R5 in the top level drawing and configurator of our products.					
COGAU-SS D50 80BAR N14MS R1.1LV	80	60	R1.1 LV	2,4 - 32	H28179801P
COGAU-SS D50 315BAR N14MS R1.1 LV	315	230	R1.1 LV	9,5 - 126	H28179701P
COGAU-SS D50 400BAR N14MS R1.1 LV	400	300	R1.1 LV	12 - 160	H28179601P
REED Contact Gauge R1.1HV ** – CONTACT CLOSSES ON RISING PRESSURE High Value					
** The contact pressure gauges type R1.1LV correspond to the low pressure contact pressure gauge, which is referred to as type R5 in the top level drawing and configurator of our products.					
COGAU-SS D50 18BAR N14MS R1.1 HV	18	13,5	R1.1 HV	7,8 - 15	H28183001P
COGAU-SS D50 25BAR N14MS R1.1 HV	25	18	R1.1 HV	11 - 21	H28183101P
COGAU-SS D50 30BAR N14MS R1.1 HV	30	20	R1.1 HV	13 - 25	H28183201P
COGAU-SS D50 40BAR N14MS R1.1 HV	40	30	R1.1 HV	17 - 33	H28183301P
COGAU-SS D50 65BAR N14MS R1.1 HV	65	50	R1.1 HV	28 - 54	H28183401P
COGAU-SS D50 80BAR N14MS R1.1 HV	80	60	R1.1 HV	35 - 67	H28183501P
COGAU-SS D50 160BAR N14MS R1.1 HV	160	100	R1.1 HV	69 - 134	H28183601P
COGAU-SS D50 315BAR N14MS R1.1 HV	315	230	R1.1 HV	136 - 264	H28183701P
REED Contact Gauge R1.2 – CONTACT OPENS ON RISING PRESSURE					
COGAU-SS D50 18BAR N14MS R1.2	18	13,5	R1.2	7,8 - 15	H28182001P
COGAU-SS D50 25BAR N14MS R1.2	25	18	R1.2	11 - 21	H28182101P
COGAU-SS D50 30BAR N14MS R1.2	30	20	R1.2	13 - 25	H28182201P
COGAU-SS D50 40BAR N14MS R1.2	40	30	R1.2	17 - 33	H28182301P
COGAU-SS D50 65BAR N14MS R1.2	65	50	R1.2	28 - 54	H28182401P
COGAU-SS D50 80BAR N14MS R1.2	80	60	R1.2	35 - 67	H28182501P